

NSV Energy LLC  
35 Hickory Springs Industrial Drive  
Canton GA 30115



Stock # R11

One (1) GE DC Link Reactor Cat # 238B3390G68, Current 450 amps, Inductance 16 MH, Temperature rise 120 Deg C, Enclosure NEMA 3 R

Shipping Dimension: 85" L x 85" W x 106" H 2870 lbs



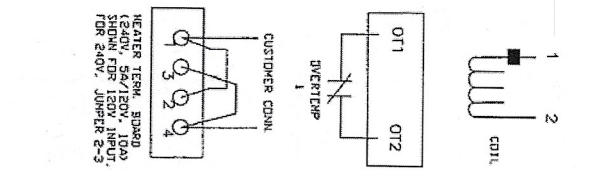
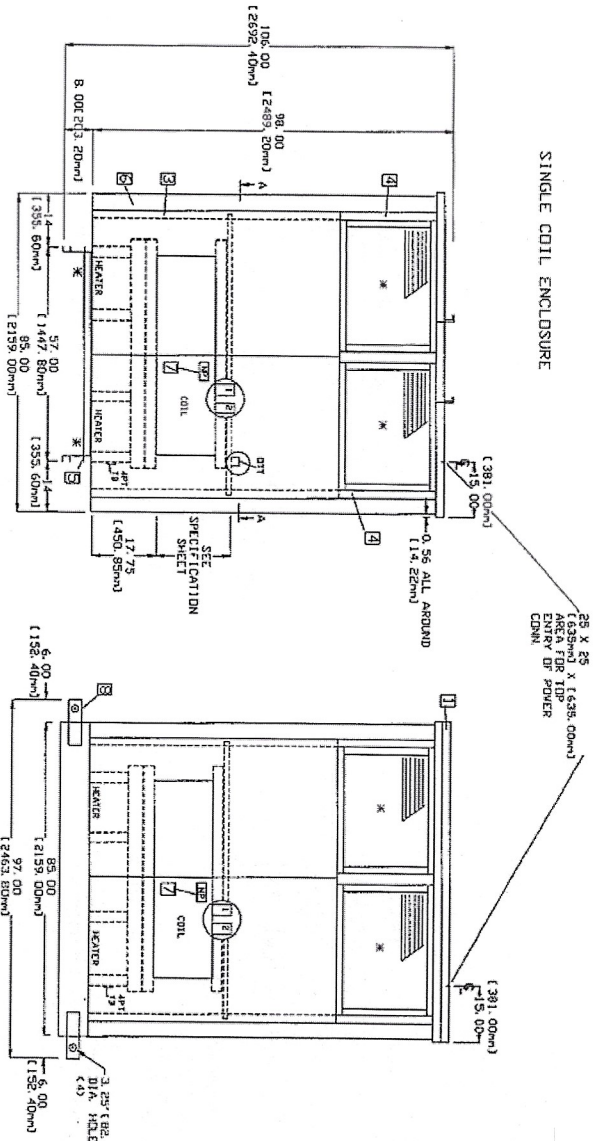
CAT. NO.: 238B3390G68  
CURRENT: 450 AMPS  
INDUCTANCE: 16 MH  
TEMP. RISE: 120° C  
WEIGHT: 1320 LBS.



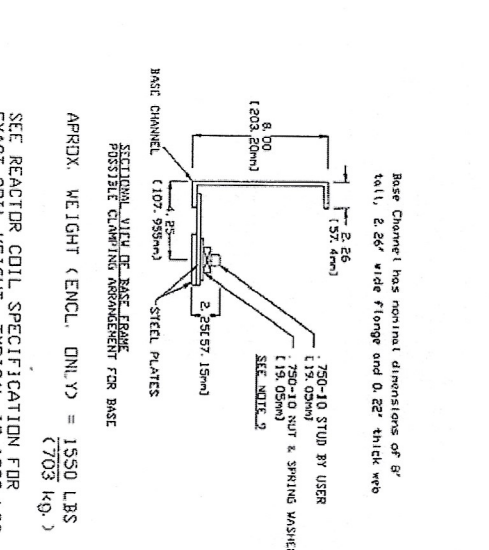
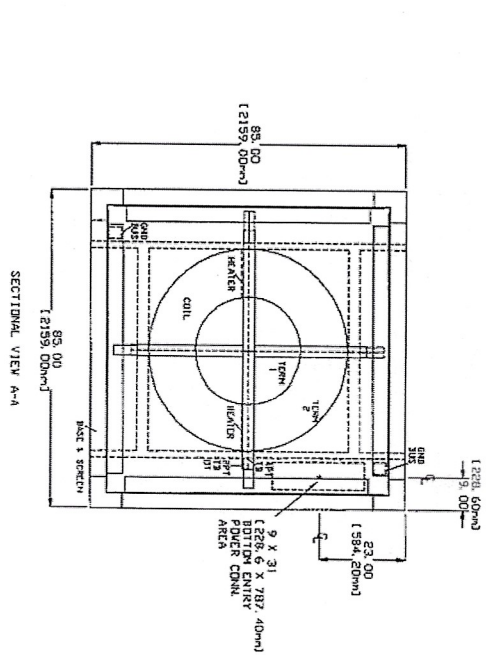
NSV Energy LLC  
35 Hickory Springs Industrial Drive  
Canton GA 30115



SINGLE COIL ENCLOSURE



- NOTES:**
- REMOVABLE TOP COVERS
  - REMOVABLE TOP PANELS(4)
  - REMOVABLE BOTTOM PANELS(8)
  - VENTILATED STORM LOUVER(4) (OUTDOOR UNIT)
  - VENTILATED SCREEN (INDOOR UNIT)
  - BASE
  - CORNER SUPPORTS
  - NAMEPLATE
  - REMOVABLE LIFTING CHANNEL(4)
  - PLATES AND BOLTS NOT SUPPLIED WITH REACTOR
  - SPACE HEATERS & TERMINAL BOARDS 18"(457.2mm) MIN. CLEARANCE (< 4 SIDES) BETWEEN ENCLOSURE AND OTHER OBJECTS FOR COOLING AND MAGNETIC CLEARANCE.
  - MEETS SEISMIC ZONE 4
  - OUTDOOR DESIGN BUILT IN ACCORDANCE TO NEMA 3R
  - ALL DIMENSIONS IN INCHES [ ] IN MILLIMETERS UNLESS OTHERWISE SPECIFIED
  - \* VENTILATION 4 SIDES AND BOTTOM



APPROX. WEIGHT (ENCL. ONLY) = 1550 LBS (703 KG.)  
 SEE REACTOR COIL SPECIFICATION FOR EXACT COIL WEIGHT. TYPICAL IS 1320 LBS (599 KG.)  
 COIL WEIGHT VARIES FROM 1000 - 6000 LBS (453.7 - 2722.3 KG.)

**BUS TERMINALS**  
 (SEE SPECIFICATION SHEET FOR BUS SIZE & QTY. OF HOLES)  
 ALL HOLES IN BUS .635 DIA. (1/16") FOR .50" (12.70mm) BOLT

REV.	REVISION DATE	MADE BY	APPROVAL INDUSTRIAL SYSTEMS INC. ILL.	DATE	SHEET NO.
1		JES	INDUSTRIAL SYSTEMS INC. ILL.	01/24/2010	1
1		REVISED BY	INDUSTRIAL SYSTEMS INC. ILL.	01/24/2010	1

Detailed drawings of bus terminal configurations for 2, 3, 4, and 5 bus systems. Each drawing shows the bus width, hole diameter (.635), and hole spacing. Dimensions are provided in inches and millimeters.

GENERAL ELECTRIC 24731099  
 DC LINK REACTOR OUTLINE  
 DIV. NO. 24731099  
 REVISION 5.0  
 SHEET NO. 1