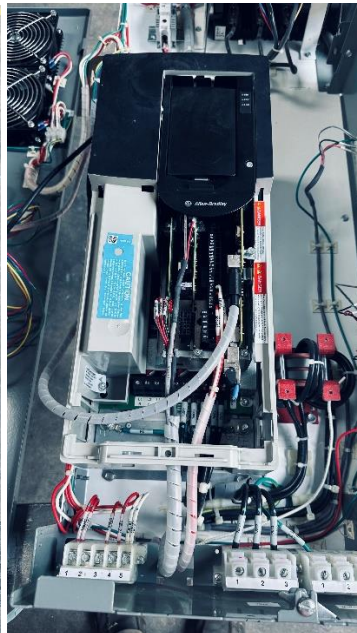


Stock # VFD25

Allen Brdley 30 Hp VFD Motor starter with VFD Allen Bradley PowerFlex 755 , cat# 20G11ND040AA0NNNNN Series A, normal rating 30 hp heavy duty 25 hp, input voltage 480 V AC, 3 phase , 36.7 amps, Output 0- 400 hz. 40 amps , Manufacture date 2016 , Made in Mexico
 Shipping size 39" x 16" x 9" 110 lbs



Nameplate 1: Specifications and Custom Catalog Number representing options installed at factory. See Nameplate 2 (Located behind HIM) for equivalent base catalog number and separate options

Cat No: 20G11 N D 040 AA0NNNNN
 UL Open Type / IP20 - without Debris Hood and Conduit Plate
 UL Type 1 - only with Debris hood and Conduit Plate

Series: A

	400V Class		480V Class	
	22kW (18.5kW)	30 HP (25 HP)	30 HP (25 HP)	30 HP (25 HP)
Power ND (HD)				
Input: 3 Phase 47-63Hz				
AC Voltage Range	342-440	432-528		
Amps ND (HD)	41.2 (35.4)	38.7 (31.2)		
Output: 3 Phase 0-400 Hz				
AC Voltage Range	0-400	0-480		
Base Freq. (default)	50 Hz	60 Hz		
Cont. Amps ND (HD)	43 (37)	40 (34)		
60 Sec Ovid Amps ND(HD)	47.3 (55.5)	44 (51)		
3 Sec Ovid Amps ND(HD)	64.5 (66.6)	60 (61.2)		

Mfd. on 2016/06/27
Allen-Bradley
 Rockwell Automation, 1201 S 2nd St, Milwaukee, WI 53204, USA
 PRODUCT OF MEXICO FAC 1189

Original Firmware: 12.001
 Serial Number: 48160584

CE 0036
 KCC-REM-RAA-200-B
 Ex II (2) GD
 TÜV 13 ATEX 7448 X
 WHEN OPTION IS INSTALLED