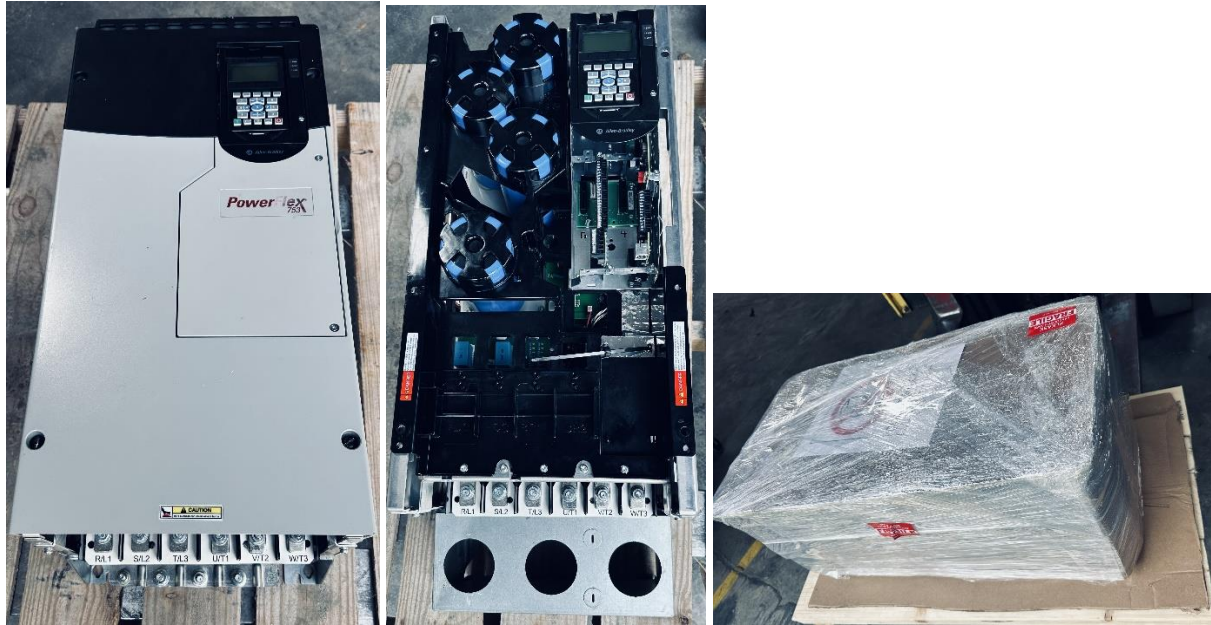


NSV Energy LLC  
 35 Hickory Springs Industrial Drive  
 Canton GA 30115



Stock # VFD26

Allen Bradley PowerFlex 753 VFD, cat# 20F1AND248JNONNNNN series A Frame 6, normal duty rating 200 hp 132 KW heavy duty 150 hp, 110 KW input voltage 480 V AC, 3 phase , 232.8 amps, Output 0-400 hz. 248 amps, Serial no 88372614 , C(UL) listed, Manufacture date 2021 , Made in USA  
 Shipping size 36" x 20" x 20" 238 lbs



**Nameplate 1: Specifications and Custom Catalog Number**  
 representing options installed at factory.  
 See Nameplate 2 (Located behind HIM)  
 for equivalent base catalog number and separate options

**Cat No: 20F1A N D 248 JNONNNNN**      **Series: A**

UL Open Type / IP00 ( UL Type 1 with Conduit Plate)  
 UL Type 1 - only with Conduit Plate and Debris Label  
 Rear = UL Type 4X/IP66 with 4X flange adapter kit  
 MODEL NUMBER: PowerFlex 753      400V Class      480V Class

| Power ND (HD)                   | 132kW (110kw) | 200 HP (150 HP) |
|---------------------------------|---------------|-----------------|
| <b>Input: 3 Phase 47-63Hz</b>   |               |                 |
| AC Voltage Range                | 342-440       | 432-528         |
| Amps ND (HD)                    | 254.7 (200.8) | 232.8 (174.6)   |
| <b>Output: 3 Phase 0-590 Hz</b> |               |                 |
| AC Voltage Range                | 0-400         | 0-460           |
| Base Frequency (default)        | 50 Hz         | 60 Hz           |
| Continuous Amps ND (HD)         | 260 (205)     | 248 (186)       |
| 60 Sec Ovid Amps ND (HD)        | 286 (307.5)   | 272.8 (279)     |
| 3 Sec Ovid Amps ND (HD)         | 390 (390)     | 372 (372)       |

Mfd. on 2021/07/07      Original Firmware: 14.006

**Allen-Bradley**  
 Rockwell Automation, 1201 S 2nd St, Milwaukee, WI 53204, USA      Serial Number: 88372614  
 PRODUCT OF USA FAC 1100

CE 0035      Ex II (2) GD      TÜV 13 ATEX 7448 X      WHEN OPTION IS INSTALLED      Functional Safety Type Approved      WHEN OPTION IS INSTALLED

KCC-REM-RAA-207-B      EAC      25      QR Code