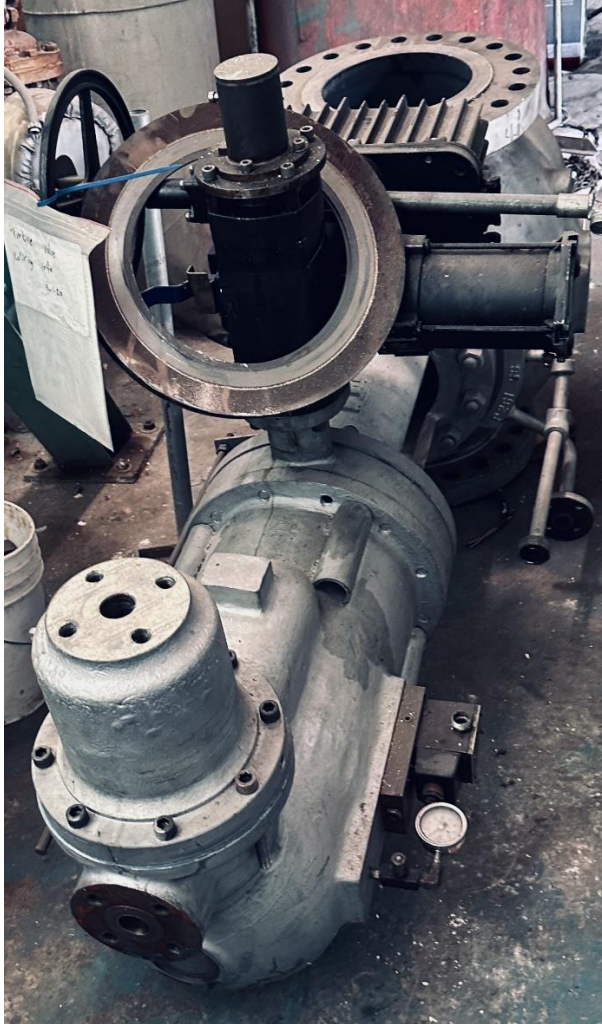


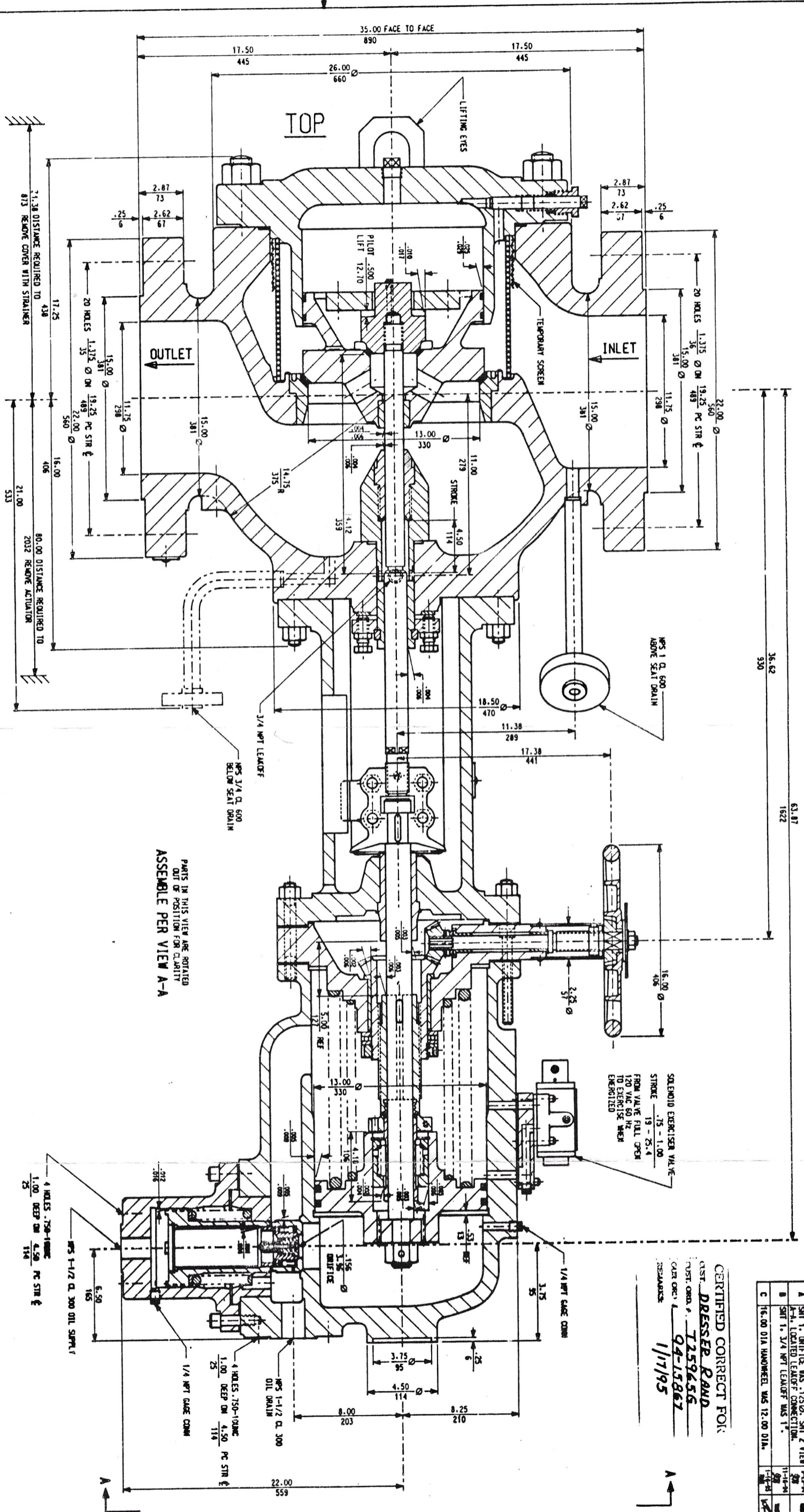
Stock #TG55

12" Class# 600 Gimpel Steam Turbine trip and throttle valve, Inverted, with Oil cylinder
Customer order no T25965G, 94-15867 Dwg No P-6809, Design 675 psig/750 deg F,
Made in USA

Shipping size 92"x 48"x 56" 5,250 lbs



Grimpel Co. Telephone #
215-757-5141
Main Caraka



| REV | DESCRIPTION | DATE | APP |
|-----|--|----------|-----|
| A | SHIT 1, ORIFICE WAS .1730, SHIT 2 VIEW | 8-23-94 | MM |
| B | 1/4" LOCATED LEAKOFF CONNECTION | 11-27-94 | MM |
| C | SHIT 1, 3/4" NPT LEAKOFF WAS 1" | 11-27-94 | MM |
| | 16.00 DIA HANDWHEEL WAS 12.00 DIA. | | |

CERTIFIED CORRECT FOR:
DRESSER RAMD
CUST. ORDER # 7259656
CAR. ORDER # 94-15867
1/17/95

- NOTES:
1. ALL DIMENSIONS EXCEPT CLEARANCES GIVEN MILLIMETERS; BAL. INCH PSIG.
 2. VALVE CANNOT BE OPENED WITHOUT OIL PRESSURE.
 3. NUMBER TURNS TO STROKE VALVE 40.
 4. ALL CLEARANCES DIMETRICAL AND INCHES UNLESS OTHERWISE NOTED.
 5. VALVE SHALL BE HORIZONTAL/VERTICALLY TESTED AT 1500 PSIG (120 BAR) AND AT 900 PSIG (60 BAR) FOR SEAT TIGHTNESS.
 6. PARTS LIST #P2149.

7. ALL STEAM FLANGES EXCEPT FACES SHALL HAVE PHOSPHORIC ANhydride FINISH TO 250 MICRONS. 25 TO 50 MICRONS FOR ALL OTHER SURFACES. ALL CUTTING TOOL .005 ADVISOR ON LAMEN.

P2191, #P134, #P1171, #P1723

GRIMPEL CORPORATION
LANHARNE, PA

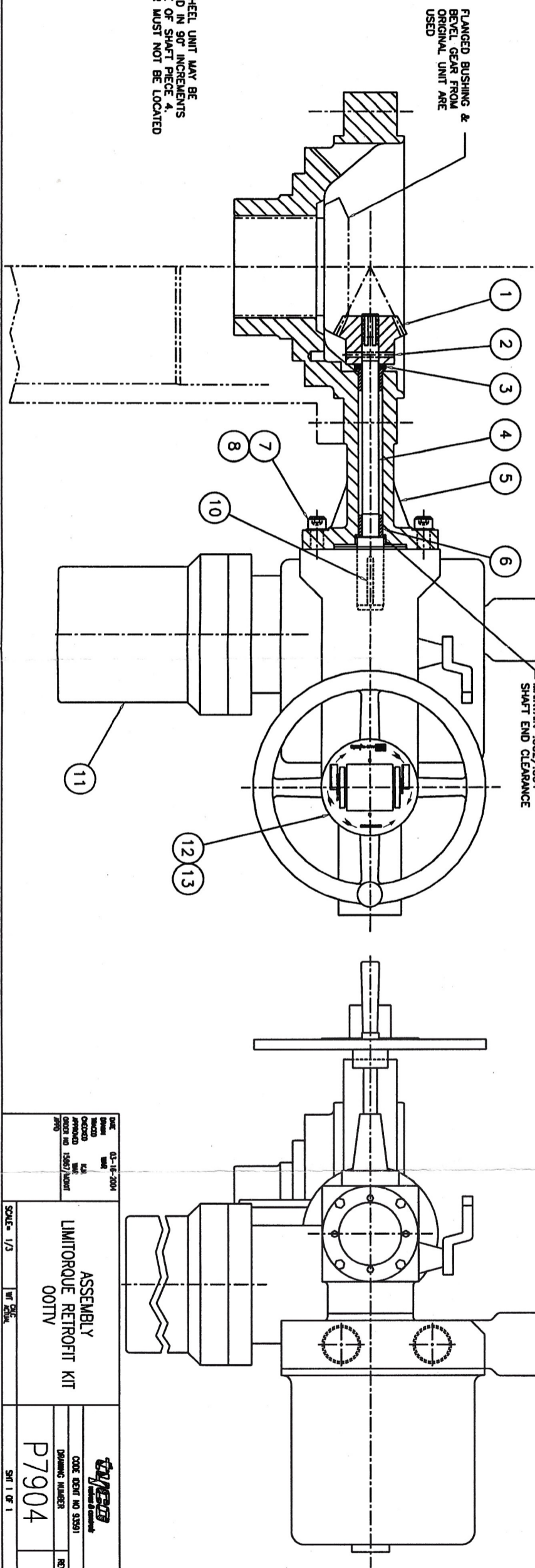
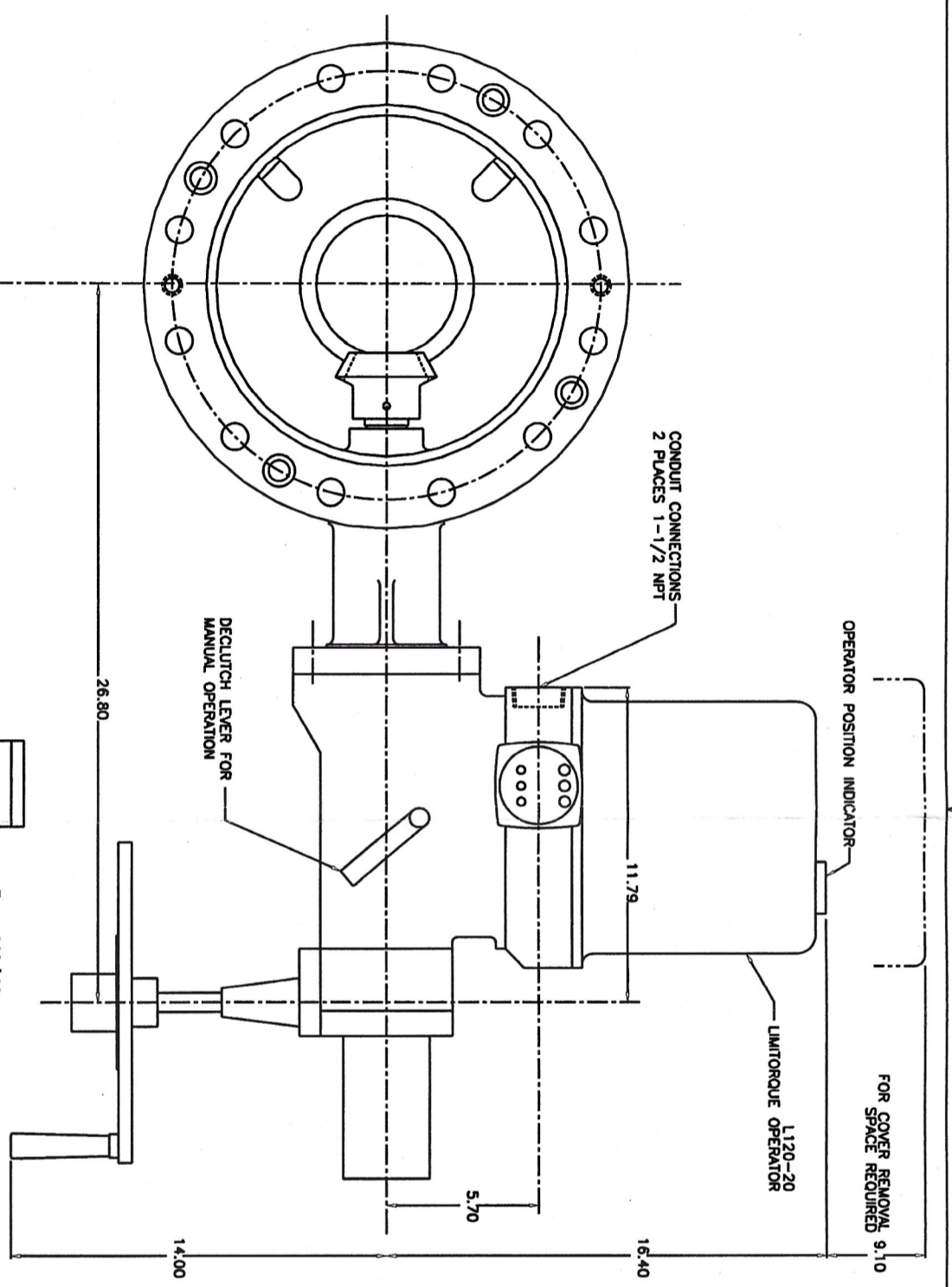
CONTRACT NO. 85591

QUANTITY NUMBER
P6809

| QTY | MAXIMUM OPERATING STEAM CONDITIONS | DESIGN | TRIP | RESET | RETRY FOR OIL PRESSURE | WITH STEAM | WITHOUT STEAM | REMARKS |
|-----|------------------------------------|-----------|---------|----------|------------------------|------------|---------------|---------|
| 438 | 675 | 47 | 45-60 | WITH OIL | 11-12 | 42-48 | 31-41 | |
| 32 | 355-C | | 3.1-4.1 | PRESCORE | 7-8 | 2.5-3.3 | 2.5-2.8 | |
| ONE | 750-F | | | | | | | |
| ONE | 400-C | | | | | | | |
| 1 | 7259656 | | | | | | | |
| | DRESSER RAMD | | | | | | | |
| | CUSTOMER | ORDER NO. | | | | | | |

D C B A A B C C

| PARTS LIST | | |
|------------|------------------|-----|
| PART NO | NAME | QTY |
| 1 | GEAR, BEVEL | 1 |
| 2 | PIN, SPRING | 1 |
| 3 | WASHER, THRUST | 1 |
| 4 | SHAFT, OPERATING | 1 |
| 5 | GEAR HOUSING | 1 |
| 6 | BUSHING | 1 |
| 7 | CAP SCREW SOC HD | 4 |
| 8 | WASHER, LOCK | 4 |
| 9 | KEY | 1 |
| 10 | MOTOR OPERATOR | 1 |
| 11 | NAMEPLATE | 1 |
| 12 | SCREW, DRIVE | 1 |
| 13 | SCREW, DRIVE | 2 |



NOTES:
 1. LIMITORQUE OR HANDWHEEL UNIT MAY BE INDEPENDENTLY ROTATED IN 90° INCREMENTS ABOUT THE CENTERLINE OF SHAFT PIECE 4. THE LIMITORQUE MOTOR MUST NOT BE LOCATED AT TOP SIDE.

| | | |
|---|--------------------------|--|
| DATE: 03-16-2004 | DESIGNED BY: [Signature] | SCALE: 1/3 |
| CHECKED BY: [Signature] | DATE: [Signature] | REV: [Signature] |
| ORDER NO: 1580/UNIT | REV: [Signature] | |
| ASSEMBLY LIMITORQUE RETROFIT KIT 00TV | | |
| | | CODE DEPT NO 93501 DRAWING NUMBER P7904 SHEET 1 OF 1 |

| REV | DESCRIPTION | DATE | APPD |
|-----|-------------|------|------|
| | | | |